



# EvolutionSCADA™

YOU'LL NEVER GET LEFT BEHIND.  
FLEXIBLE PIPELINE MANAGEMENT & CONTROL SYSTEMS

## Evolution FlowSafe™

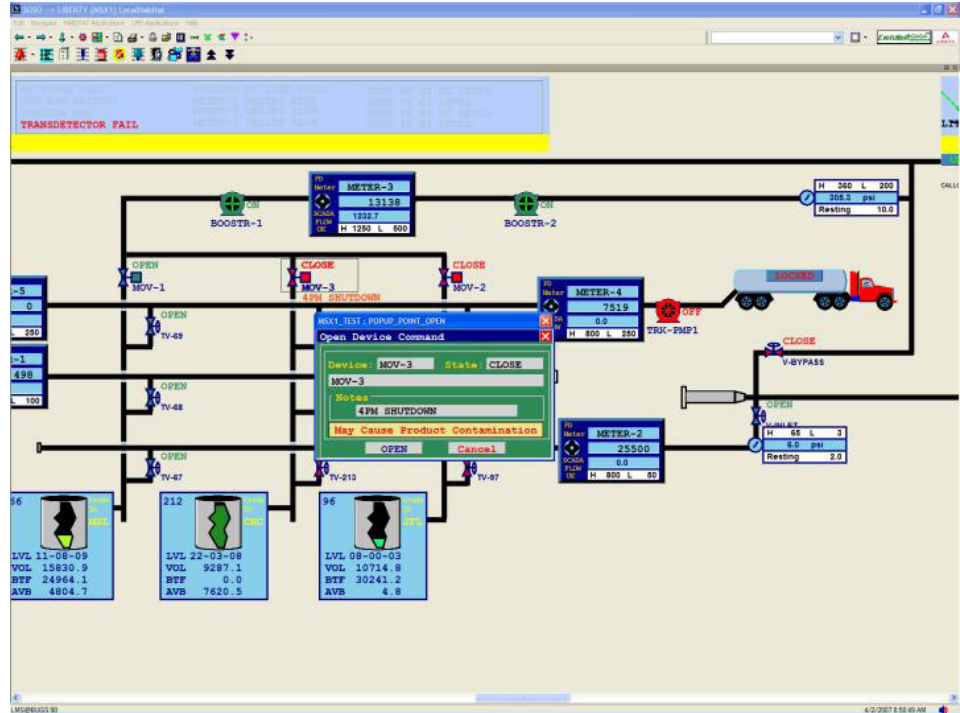
### Prevent Serious Control Errors Even In Complex Pipelines.

Prevent control requests that could create unsafe pipeline conditions or operational problems with Evolution FlowSafe™, the only flow path verification tool capable of analyzing bi-directional flow and other complex pipeline configurations.

This application runs automatically whenever the SCADA system detects a change in status for a pump or valve (or any other device you choose to monitor), or when you issue a control for one of these devices.

The application also runs periodically at any time interval you specify and issues an alarm if the pipeline is in an unsafe condition.

Evolution FlowSafe checks upstream and downstream flow path conditions to make sure a requested control will not create unsafe pipeline conditions, contaminate products, violate a batch schedule, or permit improper valve sequencing (opening and closing).



It prevents you from starting a pump against a closed valve — even a valve far downstream.

If conditions are safe, the control is issued. If not, Evolution FlowSafe issues a warning, giving you the option to cancel the control request or override the warning.

In the event you choose to override a warning, Evolution FlowSafe logs the override and issues the control as requested.

“This system has the most sophisticated flow path control application I’ve ever seen. The number of operator response incidents here has dropped from 10 to 20 per year to fewer than five in the last two years.”

### See It Live!

Call 425.821.7618 or email [sales@evolutionscada.com](mailto:sales@evolutionscada.com) to schedule a demonstration today.

